

YEAR 2023

CORE STATION 3003

ROAD NETWORK MAJOR

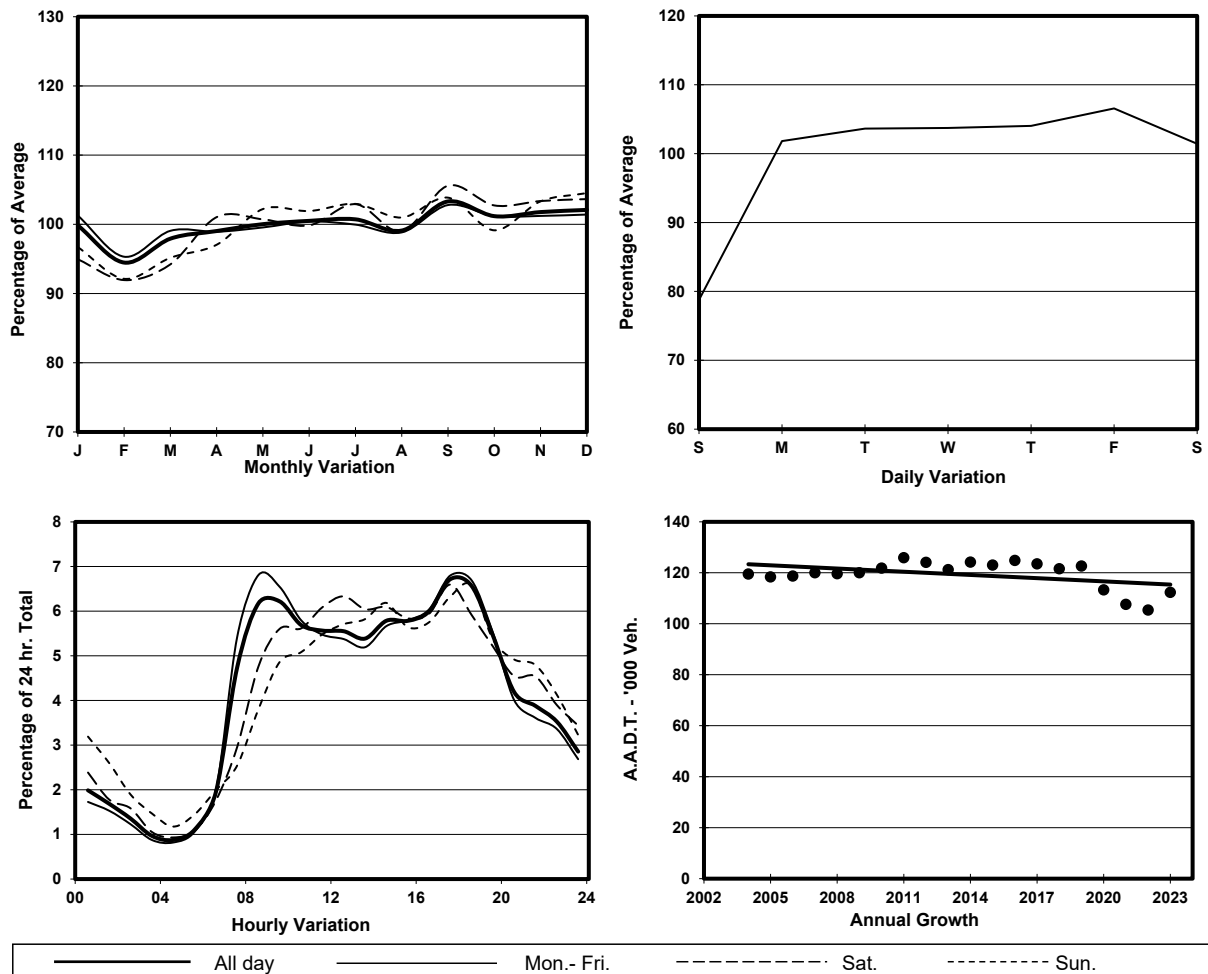
ROAD TYPE URBAN TRUNK ROAD

LINK PRINCE EDWARD RD E & FO <K10A> (from CHOI HUNG RD to NEAR KING TAI COURT)

6.2m 13.2m 1.2m 13.3m 2m

E bound 4 lanes W bound 4 lanes

1. TRAFFIC FLOW VARIATION AND GROWTH



2. TRAFFIC CHARACTERISTICS (BY DIRECTION)

Parameter	All - Day	Mon. - Fri.	Sat.	Sun.
EAST BOUND				
A.A.D.T.	64470	67850	66100	51490
R 12 / 24 - %	68.8	70.4	65.6	62.6
R 16 / 24 - %	86.8	87.7	85.6	82.6
AM Peak Hour	0900-1000	0900-1000	0900-1000	0900-1000
One-way flow at AM peak hour	4080	4580	3500	2450
T - % (AM)	-	-	-	-
PM Peak Hour	1700-1800	1700-1800	1700-1800	1800-1900
One-way flow at PM peak hour	4330	4610	4380	3540
T - % (PM)	-	-	-	-
Prop.of commercial vehicles - 16 hr.	-	-	-	-
WEST BOUND				
A.A.D.T.	47820	50320	49250	37990
R 12 / 24 - %	72	73.2	70.8	65.5
R 16 / 24 - %	87.8	88.6	86.6	83.6
AM Peak Hour	0800-0900	0800-0900	0900-1000	0900-1000
One-way flow at AM peak hour	3140	3640	2960	1900
T - % (AM)	-	-	-	-
PM Peak Hour	1800-1900	1800-1900	1700-1800	1700-1800
One-way flow at PM peak hour	3270	3530	3230	2410
T - % (PM)	-	-	-	-
Prop.of commercial vehicles - 16 hr.	-	-	-	-

3. OTHER INFORMATION AND COMMENT